

Fast + Simple
Focused on Veterinary Diagnostics



Specialists in Veterinary
Laboratory Supplies

FASTest® D4T bovine ad us. vet.

Diarrhoea screening in the farm

Fast test for the qualitative detection of Bovine Coronavirus (BCV),
Cryptosporidium parvum, *E.coli*-K99 (F5) and Rotavirus in feces of cattle

Fast aetiological diagnostics

- Bovine Coronavirus (BCV)
- *Cryptosporidium parvum*
- *E.coli*-K99 (F5)
- Rotavirus

Rapid specific therapy (especially *C. parvum*/*E.coli*)

Rapid, long-term and
effective prophylaxis
in the stock

Reduces on-going costly
treatment programs and
mortality rates



- Simple and hygienic test procedure with feces
- Innovative test system and reliable pathogen detection
- Parallel incubation of all 4 test membranes using the same buffer diluent
- Fast test interpretation within 10 minutes
- Storage at room temperature (15-25°C)
- Long shelf life
- Compact test box with 10 tests

Exclusive UK Distributor
For MegaCor Diagnostik
info@vetlabsupplies.co.uk

FASTest® D4T bovine ad us. vet.

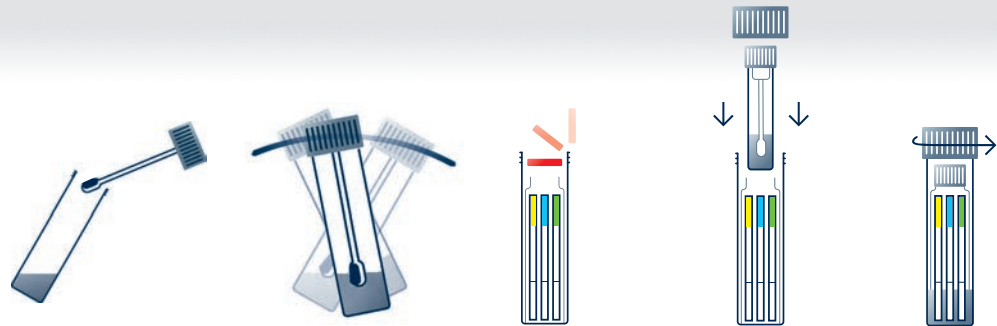
Diarrhoea caused by Bovine Coronavirus (BCV), *Cryptosporidium parvum* (*C. parvum*), enterotoxigenic *Escherichia coli* K99 (F5) and Rotavirus (RV), is a major cause of severe illness and death in calf rearing. Especially *C. parvum*, but also Rotavirus are responsible for infectious diarrhoea in domestic animals and humans (cryptosporidiosis = zoonosis).

Clinical symptoms can vary due to age and immune state of the animal. Particularly in calves within the first two weeks of life, severe diarrhoea can occur (neonatal diarrhoea, ND), often with high mortality! Due to the high infection pressure, a general diarrhoea problem could occur in the farm. In this case, aetiological diagnostics of all bovines, regardless of age (asymptomatic shedders), and a check-up of feeding and keeping management is advisable. Special attention should be paid to Cryptosporidiosis, because it is the only one that can be treated specifically. Here, an early diagnosis is a prerequisite for a successful therapy, because medication has to begin within 24 hours after onset of diarrhoea. Therefore, an early detection is necessary for a successful treatment as well as fast initiation of prophylactic measures.

In contrast to microscopic test methods depending on intact oocysts, the test strip for *C. parvum* of FASTest® D4T bovine also detects surface antigens of vegetative *Cryptosporidium* forms or fragments of all *Cryptosporidium* forms, respectively.

	Rota	BCV	<i>E.coli</i> (F5)	Crypto
Sensitivity	96.4%	100%	88.9%	100%
Specificity	95.4%	100%	100%	95.8%

Test procedure



Test interpretation



POSITIVE



NEGATIVE



Ruminants, especially calves and lambs, are known to be important hosts for *Giardia duodenalis*. Latest studies in Europe document prevalences from 10 up to 50%, depending on age and keeping management. Therefore, it is generally advisable to use the FASTest® GIARDIA Strip in calves and lambs to get an overview of the Giardia status in livestock.



Distribution:

UK Distributor



Specialists in Veterinary
Laboratory Supplies