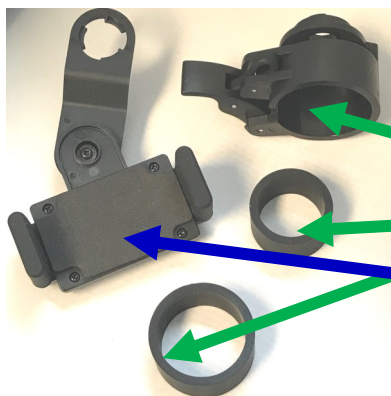


InSight™ Microscope Eyepiece Adapter For Smartphones - Instructions For Use

Cat No: 1950

Before assembling the Eyepiece Adapter and fitting it to your microscope, please ensure your microscope is ready to use and in addition, your slide is prepared and ready for viewing. If your microscope has eyepiece cups please remove the cup from your chosen microscope eyepiece.



Step 1:

Firstly, remove & check the contents from the box.

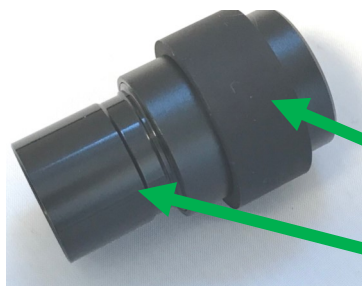
1 x Eyepiece Adapter Cup & Clamp

2 x Rubber Bands for eyepieces

1 x Adapter Arm

Step 2:

Attach the rubber band around your eyepiece, placing the band half-way down the eyepiece. Ensure that it fits snugly.



Rubber Band

Eyepiece



Push the eyepiece into the Eyepiece Adapter Cup so that the eyepiece is flush to the end of the cup and clamp into place so the eyepiece is secure.

Eyepiece Adapter Cup and Clamp



Step 4:

Remove the cover from your phone (if present). Secure the phone into the grip of the Adapter Arm so it is flat against the foam pad. Line up the hole at the top of the arm with your camera.

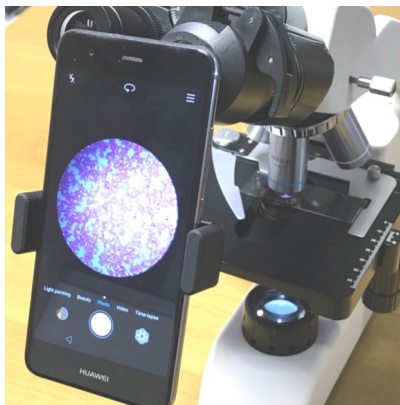
Adapter Arm Grip



Step 5:

Insert the eyepiece & Eyepiece Adapter Cup into the microscope eyepiece tube. Fit the Adapter Arm (with phone attached) to the eyepiece cup and turn anti-clockwise to hold in place. Switch on your

Eyepiece and Adaptor

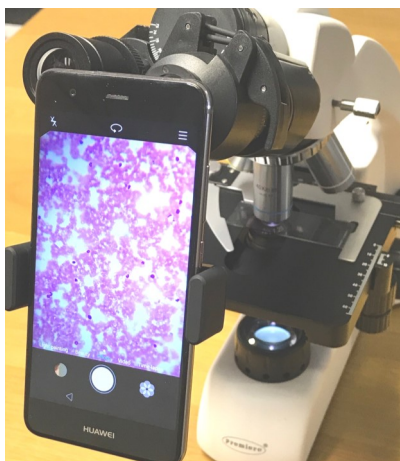


Step 6:

Adjust the position of your Smartphone so that the camera is aligned with the microscope light path.

The adapter arm can be moved up and down, or left and right as required.

Adjust the focus on your microscope, whilst looking at your phone, until you get a clear image.



Step 7:

You may need to zoom in for the image size to fill the screen. Focus camera before taking your picture.

Step 8:

After use, first remove your smartphone from the Adapter Arm. Remove the microscope eyepiece and unclamp the Eyepiece Cup to remove it from your eyepiece.