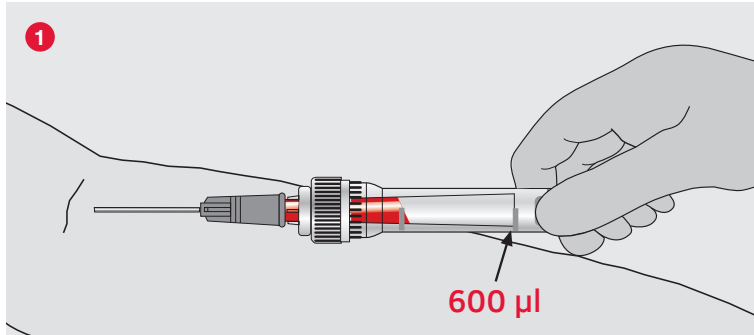
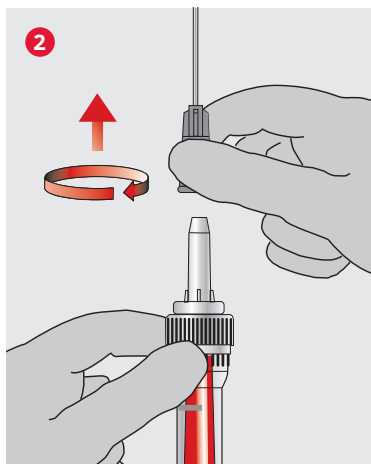


Multivette® 600

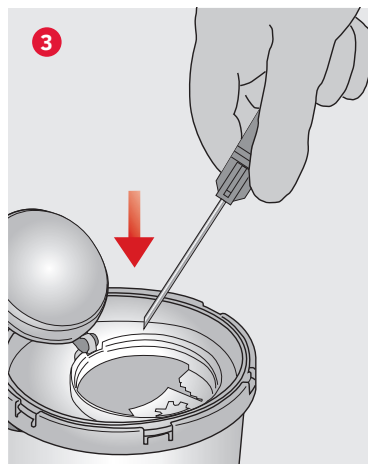
Venous blood collection



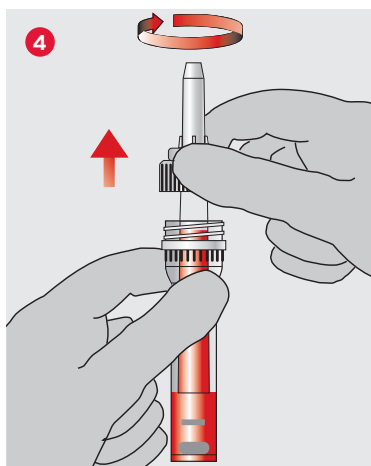
1. For simple venous collections, attach a Luer needle to the capillary tube. The special design enables the automatic filling of the inner tube using only the venous pressure. Stop collecting blood once the blood flow has reached the end of the capillary tube (600 µl).



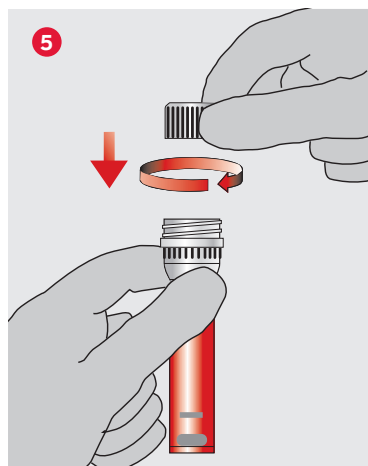
2. After the venous blood collection is complete, first remove the needle ...



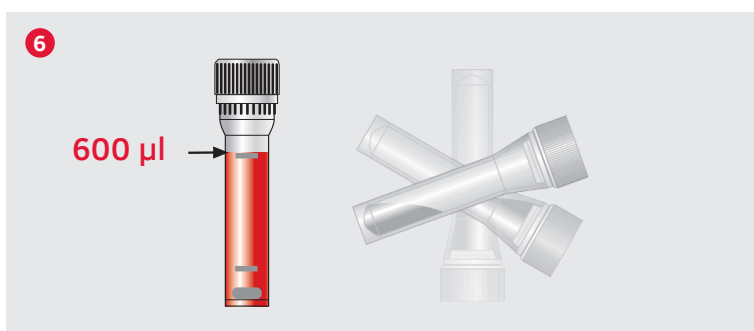
3. ... and dispose of it.



4. Immediately after that, drain the capillary tube by pulling it out and dispose of it.



5. Seal the container using the screw-on cap provided ...



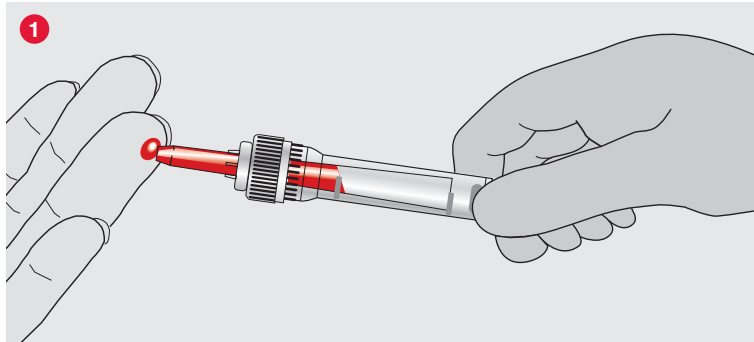
6. ... and mix the sample carefully by rotating 180 degrees.

Wear gloves!

The use of safety needles is recommended.

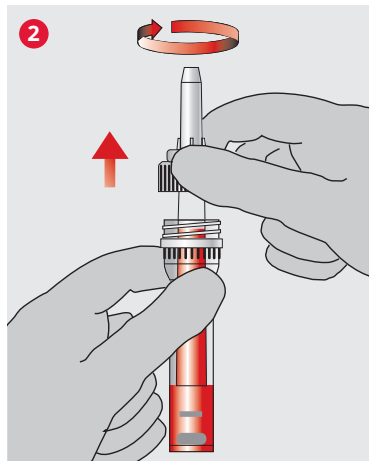
Multivette® 600

Capillary blood collection

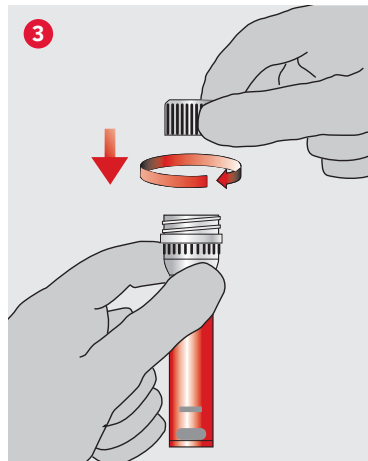


1. Hold the Multivette® in a horizontal or slightly inclined position and collect the blood sample in the capillary tube.

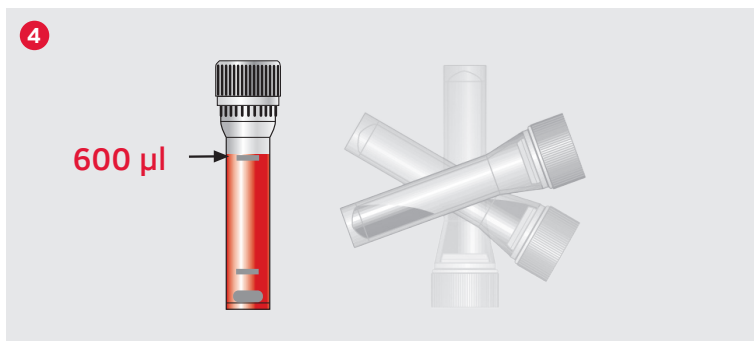
The blood collection is complete once the blood flow has reached the end of the capillary tube (600 µl).



2. Immediately after that, drain the capillary tube by pulling it out and dispose of it.



3. Seal the container using the screw-on cap provided ...



4. ... and mix the sample carefully by rotating 180 degrees.

Wear gloves!